



# Test Report

**Applicant:** FUZHOU AO MAGNET ELECTRONIC CO.,LTD

**Address:** JINSHAN INDUSTIRAL ZONE, CANGSHAN, FUZHOU ,350008 CHINA

**Report on the submitted sample(s) said to be:**

Sample Name	Ndfeb magnet
Model No.	59-439-0001
Client Reference	AOMAG
Information	
Trade Mark	AOMAG
Manufacturer	FUZHOU AO MAGNET ELECTRONIC CO.,LTD JINSHAN INDUSTIRAL ZONE, CANGSHAN, FUZHOU ,350008 CHINA
Sample Received Date	2019.08.25
Testing Period	2019.08.25 ~ 2019.08.31

**Test Requested** As specified by client, to determine the Lead, Cadmium, Mercury, Hexavalent Chromium, PBBs & PBDEs Di(2-ethylhexyl) phthalate Dibutyl phthalate Butyl phthalate Diisobutyl phthalate content in the submitted sample as mentioned in the above model number, meet the requirements of the current RoHS Directive 2011/65/EU with amendment (EU) 2015/863.

**Test Result(s)** Please refer to the following page(s).

Test by : Zou Xia

Inspected by 

Approved by : Zhou Hong Peng  
Technical Manager

**No.1 Test Result(s):**

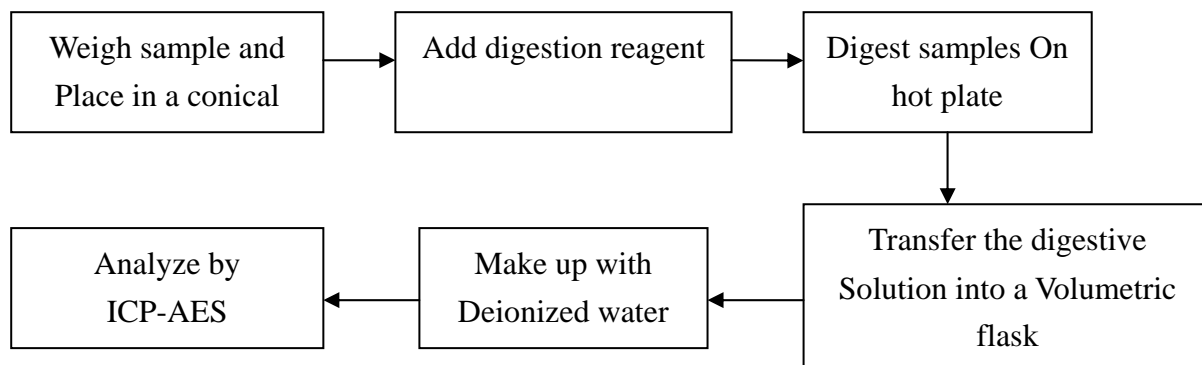
Test Item(s)	Unit	Test Method (Reference)	Result	MDL	Limit
Cadmium(Cd)	mg/kg	IEC 62321-5:2013, ICP-AES	N.D.	2	100
Lead(Pb)	mg/kg	IEC 62321-5:2013, ICP-AES	N.D.	2	1000
Mercury(Hg)	mg/kg	IEC 62321-4:2013, ICP-AES	N.D.	2	1000
Hexavalent Chromium(Cr6+)	mg/kg	IEC 62321:2008, UV-Vis	N.D.	2	1000
Sum of PBBs	mg/kg	IEC 62321:2008, GC-MS	N.D.	--	1000
Monobromobiphenyl	mg/kg	IEC 62321:2008, GC-MS	N.D.	5	--
Dibromobiphenyl	mg/kg	IEC 62321:2008, GC-MS	N.D.	5	--
Tribromobiphenyl	mg/kg	IEC 62321:2008, GC-MS	N.D.	5	--
Tetrabromobiphenyl	mg/kg	IEC 62321:2008, GC-MS	N.D.	5	--
Pentabromobiphenyl	mg/kg	IEC 62321:2008, GC-MS	N.D.	5	--
Hexabromobiphenyl	mg/kg	IEC 62321:2008, GC-MS	N.D.	5	--
Heptabromobiphenyl	mg/kg	IEC 62321:2008, GC-MS	N.D.	5	--
Octabromobiphenyl	mg/kg	IEC 62321:2008, GC-MS	N.D.	5	--
Nonabromobiphenyl	mg/kg	IEC 62321:2008, GC-MS	N.D.	5	--
Decabromobiphenyl	mg/kg	IEC 62321:2008, GC-MS	N.D.	5	--
Sum of PBDEs	mg/kg	IEC 62321:2008, GC-MS	N.D.	--	1000
Monobromodiphenyl ether	mg/kg	IEC 62321:2008, GC-MS	N.D.	5	--
Dibromodiphenyl ether	mg/kg	IEC 62321:2008, GC-MS	N.D.	5	--
Tribromodiphenyl ether	mg/kg	IEC 62321:2008, GC-MS	N.D.	5	--
Tetrabromodiphenyl ether	mg/kg	IEC 62321:2008, GC-MS	N.D.	5	--
Pentabromodiphenyl ether	mg/kg	IEC 62321:2008, GC-MS	N.D.	5	--
Hexabromodiphenyl ether	mg/kg	IEC 62321:2008, GC-MS	N.D.	5	--
Heptabromodiphenyl ether	mg/kg	IEC 62321:2008, GC-MS	N.D.	5	--
Octabromodiphenyl ether	mg/kg	IEC 62321:2008, GC-MS	N.D.	5	--
Nonabromodiphenyl ether	mg/kg	IEC 62321:2008, GC-MS	N.D.	5	--
Decabromodiphenyl ether	mg/kg	IEC 62321:2008, GC-MS	N.D.	5	--
<b>Phthalates</b>					
Dibutyl Phthalate(DBP)	mg/kg	EN14372:2004, GC-MS	N.D.	5	1000
Butyl benzyl phthalate (BBP)	mg/kg	EN14372:2004, GC-MS	N.D.	5	1000
Di-(2-ethylhexyl) Phthalate (DEHP)	mg/kg	EN14372:2004, GC-MS	N.D.	5	1000
Diisobutyl phthalate (DIBP)	mg/kg	EN14372:2004, GC-MS	N.D.	5	1000

Note: -MDL = Method Detection Limit  
 -N.D. =Not Detected(<MDL)  
 -mg/kg = ppm =parts per million

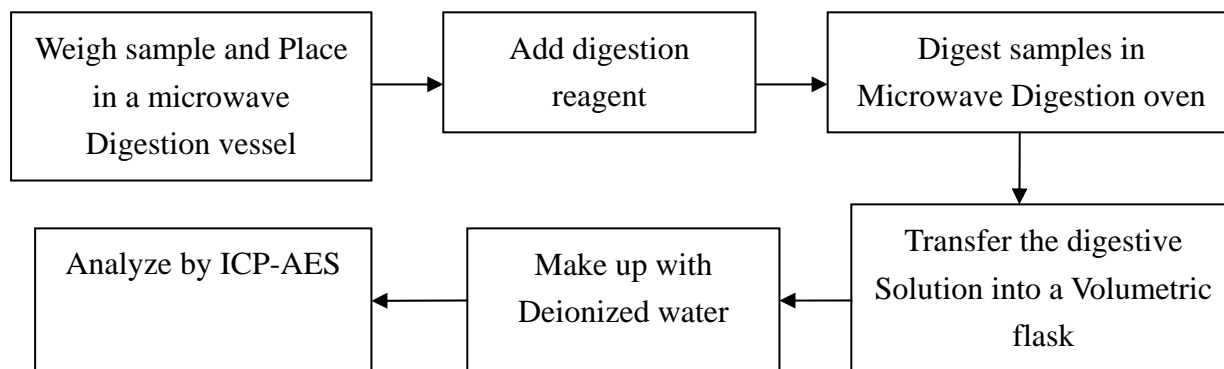


### Test process

#### 1. Test for Pb / Cd Content

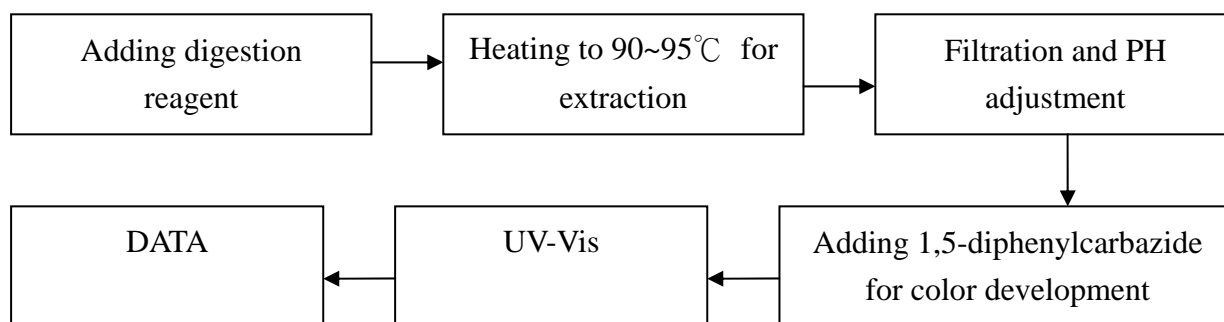


#### 2. Test for Hg Content

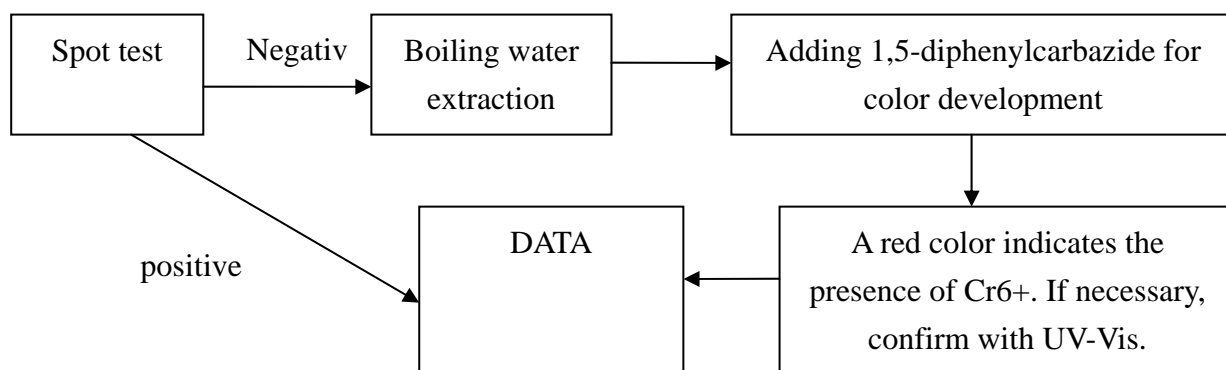


#### 3. Test for Chromium(VI) Content

Nonmetallic material

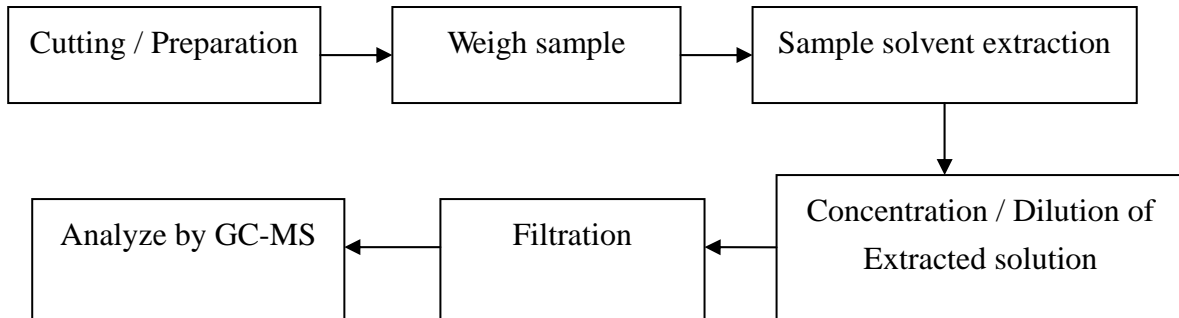


Metallic material

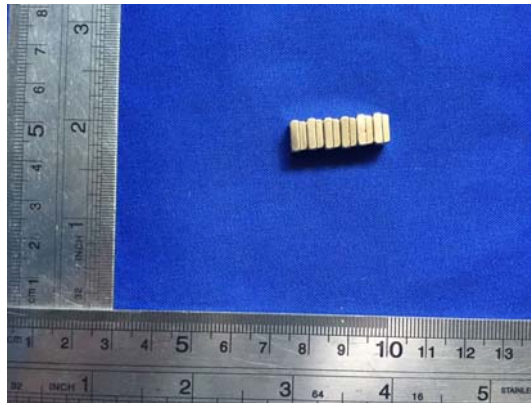




#### 4. Test for DBP, BBP, DEHP, DIBP, PBB, PBDE Content



the sample(s)



\*\*\* End of report \*\*\*

This report is considered invalidated without the Special Seal for Inspection of the LTT. This report shall not be altered, increased or deleted. The results shown in this test report refer only to the sample(s) tested. Without written approval of LTT, this test report shall not be copied except in full and published as advertisement.